

Variable device mount - Individual.Lens.Optic frosted - direct/indirect diffuse distribution - visually continuous

Device mount made of a galvanised, profiled steel sheet; surface coated with polyester resin. Tool-free attachment with design-integrated pressure caps guarantee protection against theft and dismantling. Variable position on the mounting rail. Housing colour traffic white RAL 9016; Direct/indirect light distribution, diffuse light beam distribution using the Individual.Lens.Optic made of frosted PMMA plastic. The single lens optics ensure absolute ease of assembly and are simple to maintain thanks to the easily cleaned surface. The inner rhythm of the 3-row single lens arrangement and the overriding device mount are perfectly in tune to guarantee a homogeneous appearance in the object. Heat-resistant cables including connection cable 1 m and rapid installation plug connector with tool-less phase pre-selection and locating finger. They are exchangeable, permit modernisation and reliably prolong the service life of the overall system.

CHARACTERISTICS

Order number	18574406650
EAN number	4020863358397
Commodity code	94051190
Certification mark	IP 20, Protection class I, ENEC10 VDE, F, HACCP DIN10500/Food/IFS-application-related suitability/BRC, Indoor, CE
Impact resistance (IK rating)	IK03 (-20°C bis 25°C)
Ambient temperatur	ta -20°C to 25°C
Special properties	Ready for IoT
Warranty period	5 years
State funding programs	BEG - Federal funding for efficient buildings (valid only for Germany)

ELECTRICAL ENGINEERING

Controller	Electronic driver DALI2 (1 pcs.)
System output	68W
Mains voltage	230V/50Hz
Energy efficiency class/light source	C

LIGHTING TECHNOLOGY

Placement	LED, Colour rendering/Light colour CRI ≥ 80 / 4000K
Colour tolerance (MacAdam)	3SDCM
Nominal luminous flux	11004lm
LED service life	50000h L80/B10 (Tq 25°C)
Luminaire luminous efficiency	161lm/W
Beam angle	115° (C0) / 110° (C90)
UGR lat./long.	27.8 / 27.2

MECHANICS

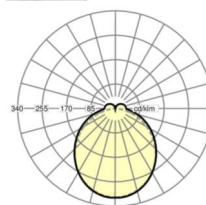
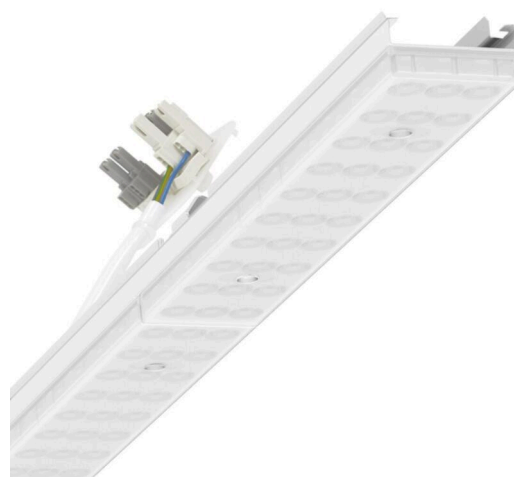
Housing colour	traffic white RAL 9016
Dimensions (LxWxDxH)	1531mm x 55mm x 37mm
Weight (net)	2kg
Type of installation	Mounting rail system installation

Dimensions

L	1531 mm	Length
B	55 mm	Width
H	37 mm	Height

DEEP-LINK

<https://www.regiolux.de/en/article/18574406650>



Reference	LED 12000lm 840
ηLB	100 %
Φ ↓/↑	90 % / 10 %
UGR lat./long.	27.8 / 27.2

